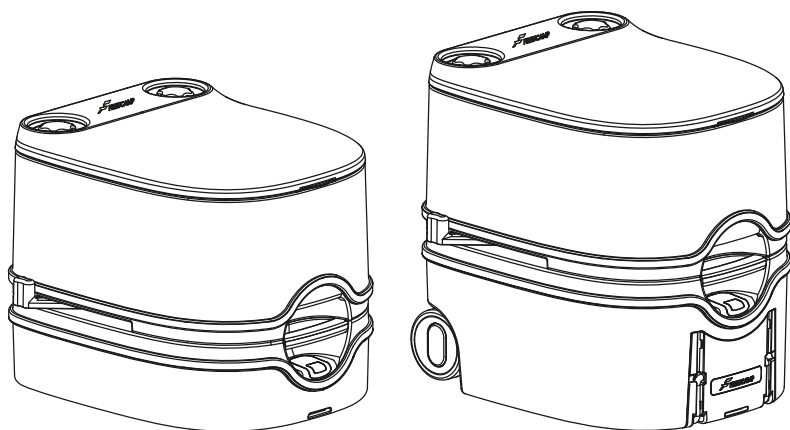




福莱康普

**EN** Portable Toilet User 01

**ZH** 便携式马桶用户手册 11



Model : W5002-S / W5002-L



EN >>

# Contents

---

## User

Introduction .....	02
Security considerations .....	02
Main components .....	03
Before use .....	04
Toilet use .....	05
Emptying the flush-water tank .....	06
Emptying the waste-holding tank .....	06

## Routine Maintenance

Maintenance and cleaning .....	08
Winter use .....	08
When this product is left unused .....	08

## Others

Disposal .....	08
Troubleshooting .....	09
Warranty regulations .....	09
Product warranty card .....	10

- Thank you for purchasing our products! Read this user manual carefully before you use the product and save it for future reference.

# Introduction

---

Thank you for choosing Freucamp portable toilet! Freucamp portable toilet is easy to use, good quality, and as convenient as at home.

We recommend that you read the instructions before you use the product and save it for future reference.





## Security considerations

---

Please read this manual carefully before installation and install it in strict accordance with this manual. After reading, please keep this manual properly.

In order to avoid injury or property damage to users and others, please strictly observe the safety warnings and cautions.

- Symbols and meanings

	Warning! Risk of causing serious injury or damage.
	Caution! Not follow instruction will lead to damage.
	This symbol indicates that this operation is forbidden.
	This symbol indicates related information.

### Warning

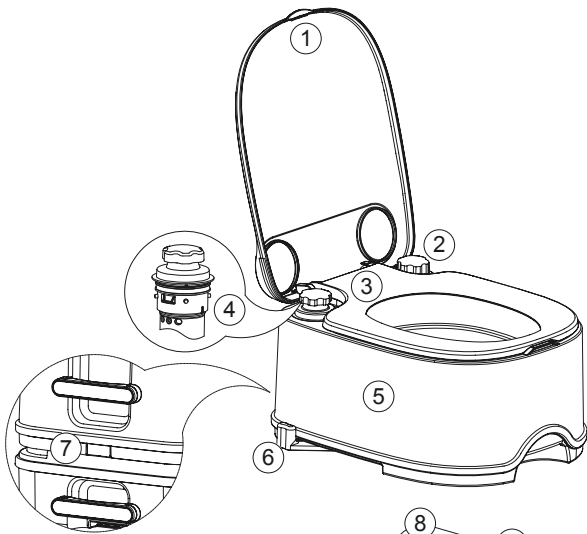
1. A lighted cigarette or other incendiary object must not be put into the toilet or it may cause a fire.
2. It is strictly prohibited to disassemble, repair or modify the product, otherwise it may cause personal injury or fire.

### Caution

1. When using this product, do not lean back on the cover to avoid damaging the product.
2. Do not pour newspaper, paper urinal pad, sanitary towel and the other clogging articles into the toilet.
3. Do not stand on the seat, cover or toilet.
4. Do not use the toilet below 0°C. If the indoor temperature is lower than 0°C, make sure you completely drain the waste-holding tank, to prevent it from expanding and freezing.
5. If you are not going to use this product for an extended period time, ensure that drain the flush-water tank and the waste-holding tank.
6. Children shall not play with this product.

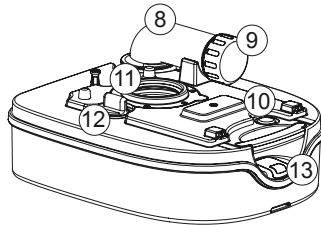
# Main components

## Main parts



### Flush-water tank

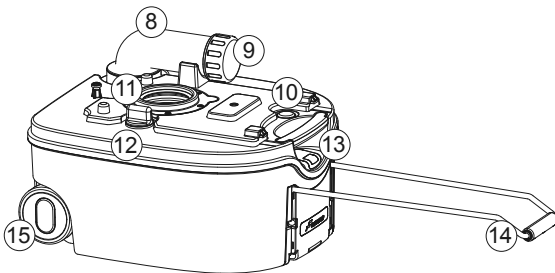
- ① Cover
- ② Water fill cap
- ③ Seat
- ④ Piston pump
- ⑤ Water tank
- ⑥ Blade handle
- ⑦ Push-button



### Waste-holding tank W5002-S/W5002-L

- ⑧ Pour out spout
- ⑨ Cap
- ⑩ Vent button
- ⑪ Lip seal
- ⑫ Blade opener
- ⑬ Level indicator waste-holding tank
- ⑭ Pull handle
- ⑮ wheel

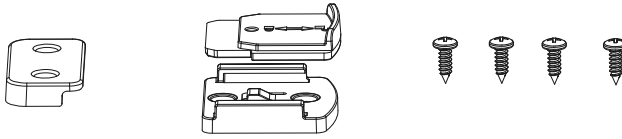
W5002-S



W5002-L

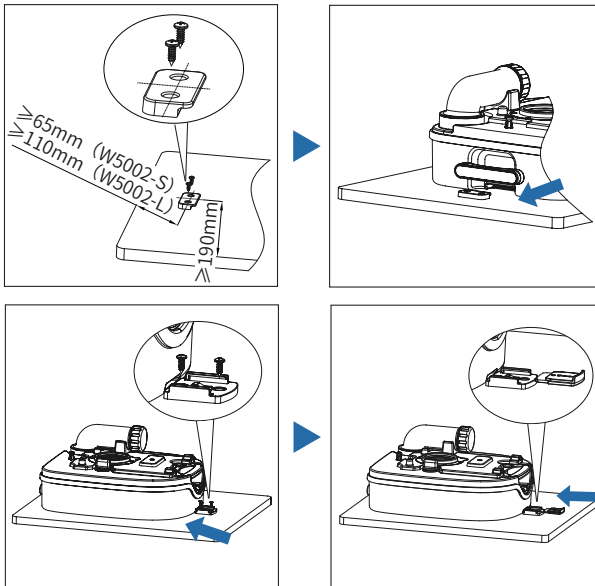
# Main components

## Optional extra for your toilet



### Hold down kit installation (if applicable)

This allows you to attach the toilet to the floor, wherever you like. One simple action releases.



## Before use

Your portable toilet is made up of two detachable sections: the flush-water tank and the waste-holding tank. Before using the toilet, it is vital that you add degradation liquid to both tanks. Refer the instructions on the degradation liquid package.

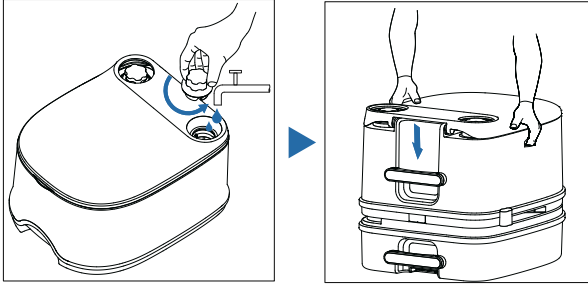
**⊘** Never add toilet cleaner directly via the valve blade or via the toilet bowl as this could damage the gasket ring of the waste-holding tank. Only fill the waste-holding tank via the pour out spout.

# Toilet use

---

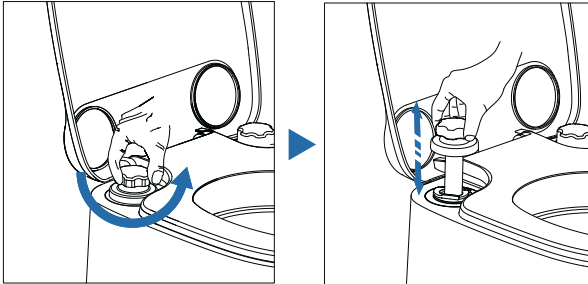
## Prepare the flush-water tank

- Remove the water fill cap and fill the flush-water tank.
- Recombine tanks.



## Flushing the toilet

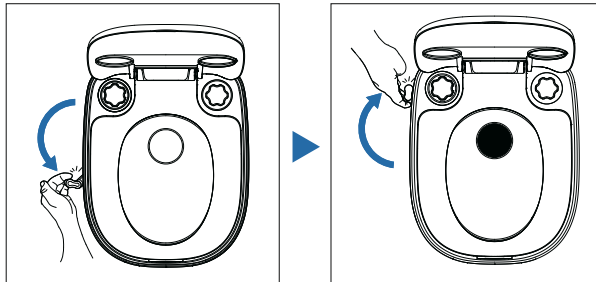
- Release the piston pump counterclockwise and press the piston pump for flush.
- After finish flushing, press the piston pump to the end and lock it clockwise.



**i** Please use soft toilet paper to prevent clogging and easily empty the waste-holding tank.

## Opening the blade

The toilet can be used with the blade open or closed. Open the blade by pulling the blade handle as described below.

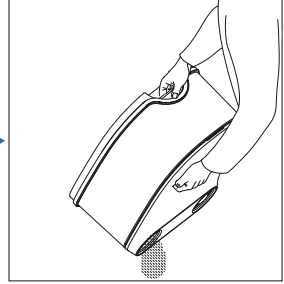
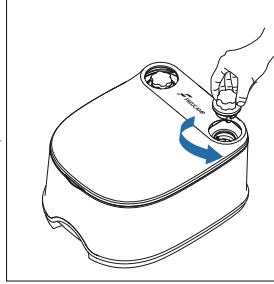
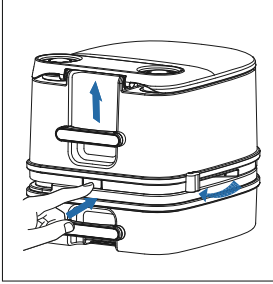


**i** Make sure you always close the blade completely after use.



## Emptying the flush-water tank

- Close the blade handle completely.
- Press the button to lift the flush-water tank up and separate them.
- Remove the water fill cap to empty the flush-water tank.



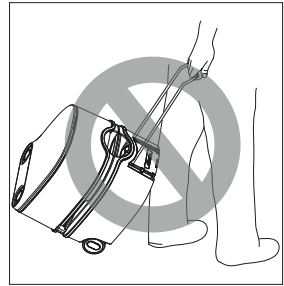
- i** Make sure that the blade handle is closed completely before removing the flush-water tank. The “click” sound is in place.



**Only empty the flush-water tank completely if you expect not to use your toilet for a long period. First empty the flush-water tank through the water fill opening, then flush the toilet until no more water is being pumped out. Emptying is only allowed at an authorized waste dump**



**W5002-L model: Do not drag the waste-holding tank and flush-water tank without separating.**

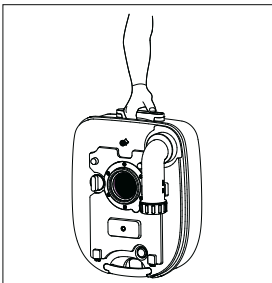


## Emptying the waste-holding tank

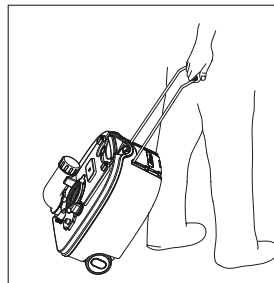
### Waste-holding tank

You need to empty the waste-holding tank when the level indicator turns red. Separate the tanks. Take the waste-holding tank to an authorized waste disposal point, emptying the waste-holding tank through the pour out spout.

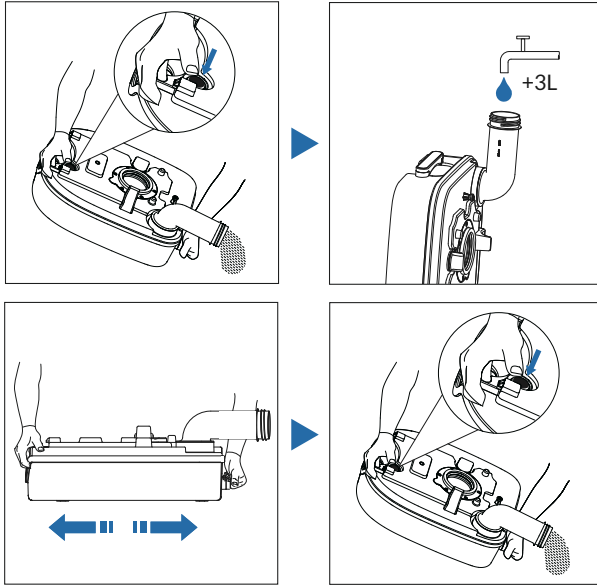
- W5002-S




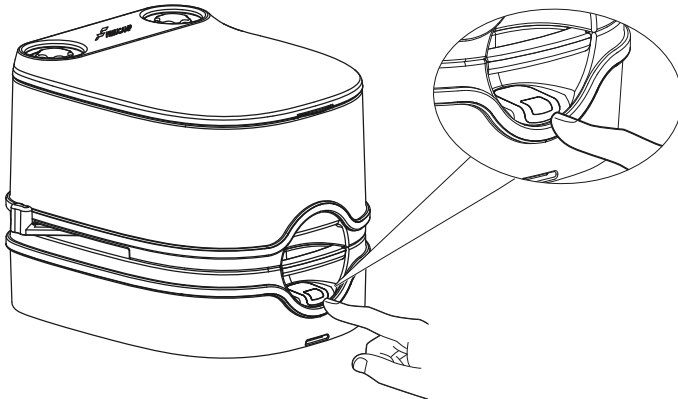
- W5002-L



# Emptying the waste-holding tank



-  Press and hold the vent button with your thumb while the pour out spout is pointing downwards to empty the waste-holding tank without splashing.



To prevent water damage to your caravan or motor home, emptying the waste-holding tank when the level indicator turns red before traveling.

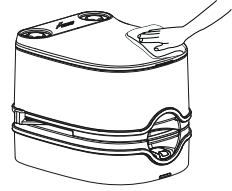
# Maintenance and cleaning

1. Freucamp recommends cleaning the toilet regularly to prevent scale.

- Please wipe the dirty area with a wrung-out soft cloth.



**Never use household cleaners to clean the toilet. These may cause permanent damage to the gasket and the other components.**



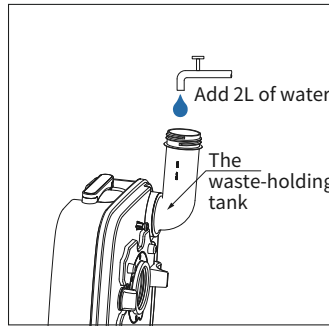
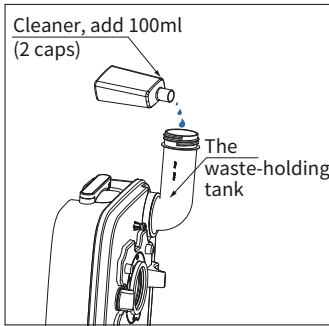
The blade gasket is a part of the toilet that is subjected to wear. Depending on the extent and manner of servicing, after a certain period the gasket will degrade and must be replaced.



**Never use Vaseline or vegetable oil to lubricate the gasket. This may cause leakage to the waste-holding tank.**

2. How to use Freucamp cleaner.

- Daily use of Freucamp cleaner on the waste-holding tank to achieve the effect of degradation paper, sterilization and deodorization.
- ⓘ Unscrew the plastic cap directly, add 2 caps (100ml) and 2L of water into the waste-holding tank.**



## Winter use

The portable toilet can be used even in cold weather as long as it is placed in a heated area. If there is no heating and there is a risk of frost, we recommend emptying the waste-holding tank and flush-water tank completely.

## When this product is left unused

- If you expect not to use your toilet for a long period. Thoroughly clean and dry the whole toilet. We recommend maintaining your toilet at the same time.
- During storage, we recommend opening the blade to avoid damage and loosening the water fill cap to ventilate the flush-water tank.

## Disposal

Your product has been designed and manufactured with high quality materials and components, which can be recycled and reused. When your product has reached its life cycle, it is recommended that you dispose of the product according to the local rules. Do not dispose of the product as normal household waste. The correct disposal will help prevent potential negative consequences to the environment and human health.


# Troubleshooting

---

## Spare parts

Original Freucamp spare parts are available through your own dealer or authorized Freucamp Service Centre.

Malfunctions	Possible reasons	Solutions
Unable to separate tanks	Blade (partially)not closed	Fully close the blade
Unable to pull out the piston pump rod	Piston pump rod is not lifted	Release the piston pump counterclockwise
Level indicator waste-holding tank malfunction	The dirt blocks the float	Clean the waste-holding tank
Unpleasant smells	1. Blade is (partially) open after use 2. Not using Freucamp cleaner	1. Close the blade after use 2. Use Freucamp cleaner

 If you cannot solve the problem, contact the authorized local service center or Freucamp Customer Service Office in your country.

## Warranty regulations

---

1. The whole machine of this product is guaranteed free of charge for one year.
2. During the warranty period, the fault caused by normal use in accordance with the instructions (determined by the official staff of the company) will be repaired free of charge.
3. During the warranty period, in case of any of the following circumstances, a charge repair and lifetime service will be implemented:
  - 1) Unable to provide this warranty card and valid purchase certificate.
  - 2) Invoice alteration.
  - 3) Failure and damage caused by unexpected factors and improper use.
  - 4) Failure damage caused by self-repair without permission of our company.
  - 5) Products that continue to be used after the expiry of three guarantees after repair.
4. Only the above warranties are made without any other warranties, express or implied, including the implied warranties of merchantability, rationality and adaptability for a particular application). The company shall not be liable for any special, incidental or indirect damages, whether in contract, in civil negligence or otherwise.
5. The period of validity of the three guarantees is calculated from the date of invoice, excluding the time occupied by repair and waiting for repair without spare parts. During this period, the consumer shall handle the repair, return and replacement with the invoice and Three Guarantees certificate.
6. The consumer can choose to return, exchange or repair the product in case of performance failure within 7 days from the date of sale.
7. If the product fails within 15 days from the date of sale, the consumer can choose to replace or repair it.

Follow-up calls: 400-839-8111

# Product Warranty Card

---

Product name: \_\_\_\_\_

Product style: \_\_\_\_\_

Factory number: \_\_\_\_\_

Manufacture Date: \_\_\_\_\_

Customer name: \_\_\_\_\_ Phone: \_\_\_\_\_

Customer address: \_\_\_\_\_



Warranty contents: \_\_\_\_\_

Customer Service Executive: \_\_\_\_\_

Customer signature: \_\_\_\_\_  Satisfied  Dissatisfied



Warranty contents: \_\_\_\_\_

Customer Service Executive: \_\_\_\_\_

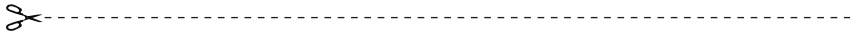
Customer signature: \_\_\_\_\_  Satisfied  Dissatisfied



Warranty contents: \_\_\_\_\_

Customer Service Executive: \_\_\_\_\_

Customer signature: \_\_\_\_\_  Satisfied  Dissatisfied





福莱康普

## 乔尼克责任有限公司

Joniq GmbH

邮编 (P.C) : 40549      电话 (TEL) : 4008398111

地址 (ADD) : 德国杜塞尔多夫赫尔特尔兰德大街 189F

Heerdter Landstraße 189F, Düsseldorf, Deutschland

- 由于产品改进，本说明中产品图片有可能与产品实物不完全相符，因此产品外观和颜色以实物为准。
- The images of the product may be slightly different from the material objects due to the continuous research and improvement efforts.